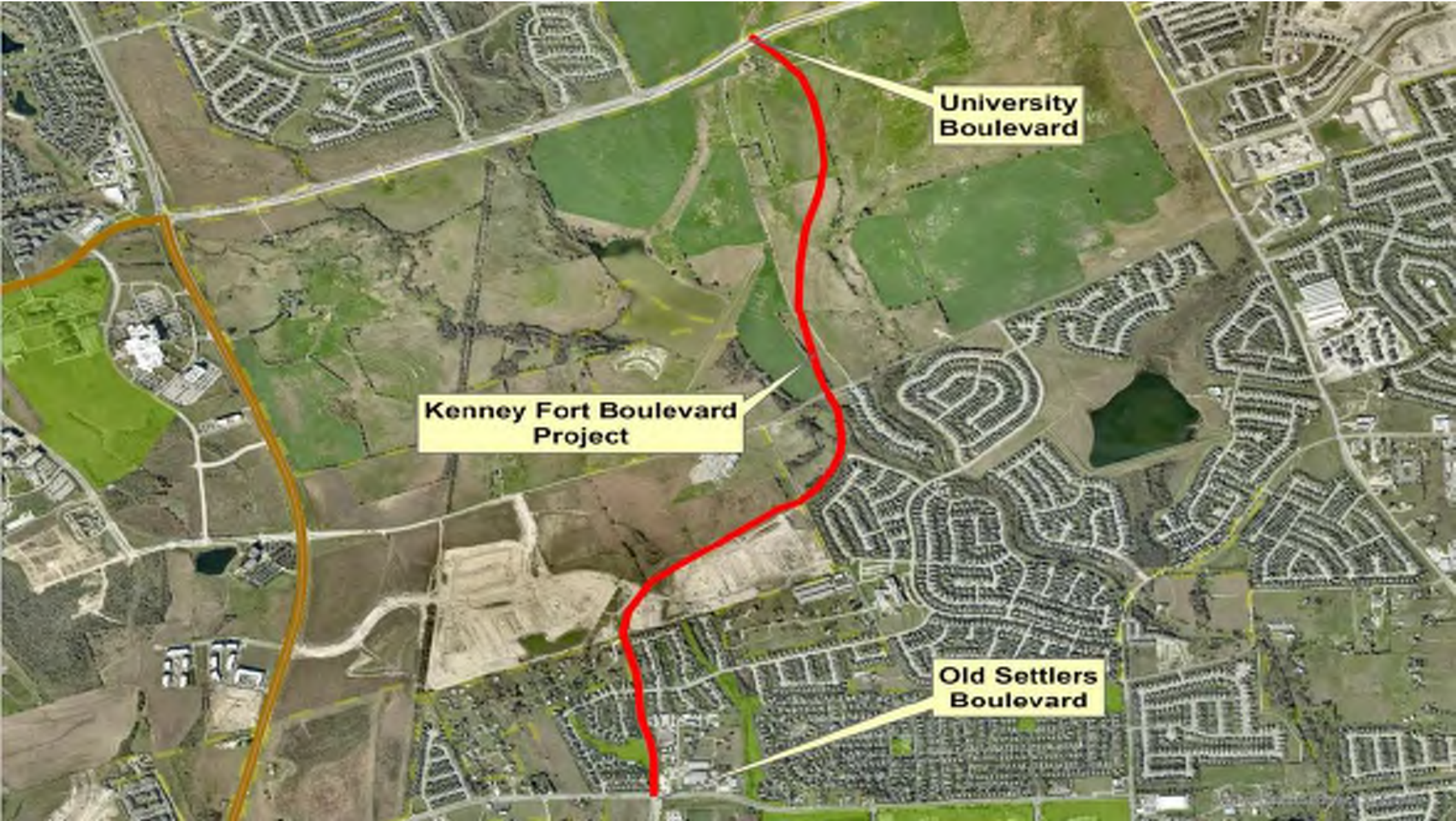


# CHANDLER ROAD

- DESCRIPTION: DESIGN AND POSSIBLE CONSTRUCTION OF IMPROVEMENTS INCLUDING AN OVERPASS AT FM 1660
- BUDGET AMOUNT: \$20M



**University  
Boulevard**

**Kenney Fort Boulevard  
Project**

**Old Settlers  
Boulevard**

# KENNEY FORT BOULEVARD

- DESCRIPTION: CONTRIBUTION TO THE CITY OF ROUND ROCK FOR THE DESIGN AND POSSIBLE CONSTRUCTION OF THE EXTENSION OF KENNEY FORT BOULEVARD FROM OLD SETTLERS BOULEVARD TO NORTH OF UNIVERSITY BOULEVARD
- BUDGET AMOUNT: \$9M
- NOTE: \$39M ADDITIONAL BY ROUND ROCK ROUND ROCK MANAGED PROJECT





Patriot way/  
Sam Houston Ave

CR 110  
Project

CR 111

130

# CR 110

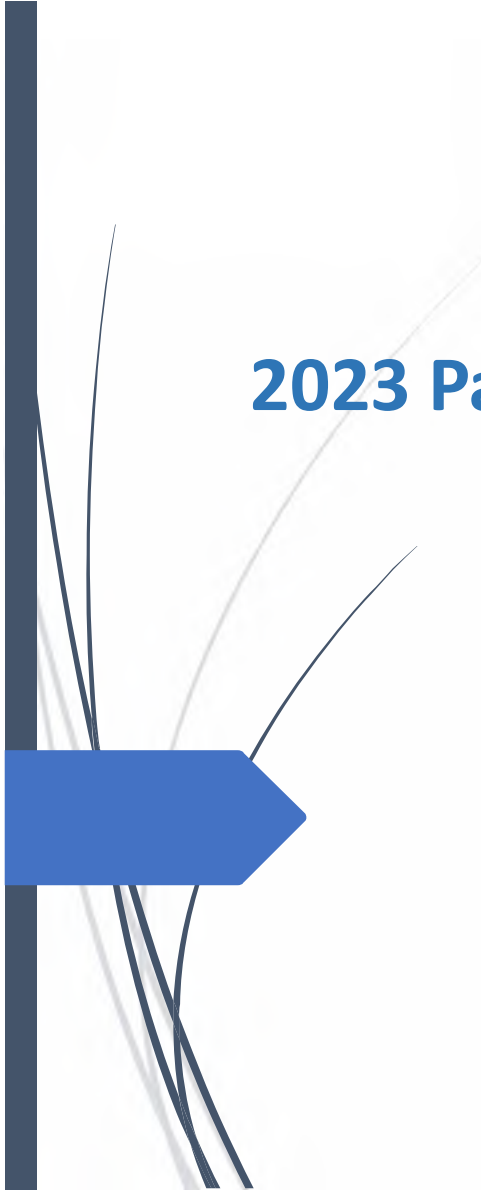
- DESCRIPTION: DESIGN AND POSSIBLE CONSTRUCTION THE EXTENSION OF CR 110 NORTH FROM CR 111 TO SAM HOUSTON AVE IN GEORGETOWN
- BUDGET AMOUNT: \$9M





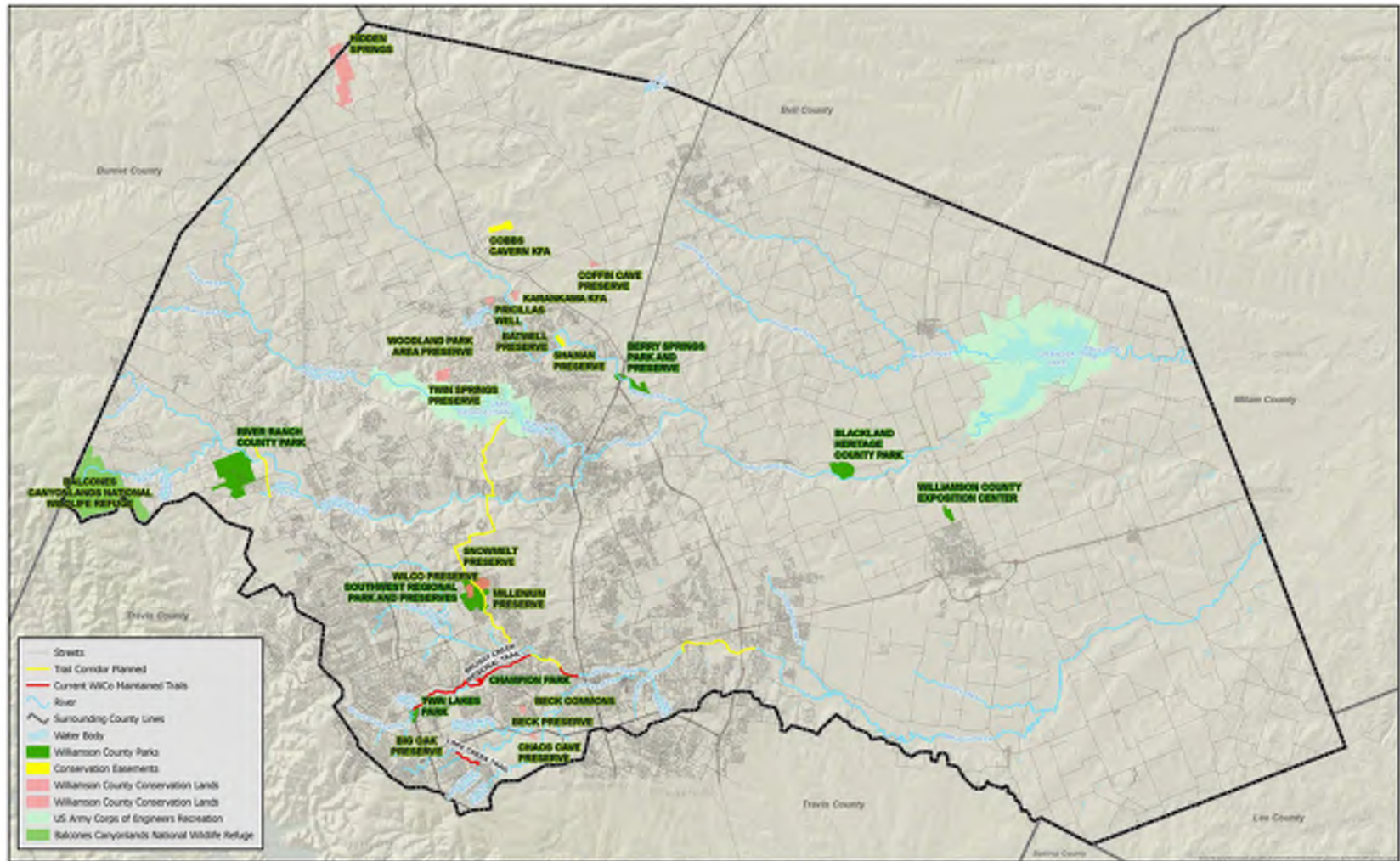
# CR 305

- DESCRIPTION: DESIGN AND POSSIBLE RE-CONSTRUCTION AND WIDENING OF CR 305 FROM I-35 TO CR 307
- BUDGET AMOUNT: \$20M
- NOTE: \$460K CONTRIBUTION FROM THE CITY OF JARRELL



# 2023 Parks Bond





**Parks, Conservation Lands, and Easements in Williamson County Texas**



Source: GIS data from various sources including the Texas Department of Transportation, the Texas General Land Office, and the Texas Parks and Wildlife Department. The map is a general representation and does not constitute a warranty or guarantee of accuracy.

© 2014 Williamson County, Texas. All rights reserved.

## 2023 Parks Bond Projects

- Shared use paths (**\$11.4 million**)
- Facility development projects: (**\$18.6 million**)
  - Berry Springs Park & Preserve
  - Expo Center
  - Twin Lakes Park
- Acquisition of future parkland (**\$29 million**)

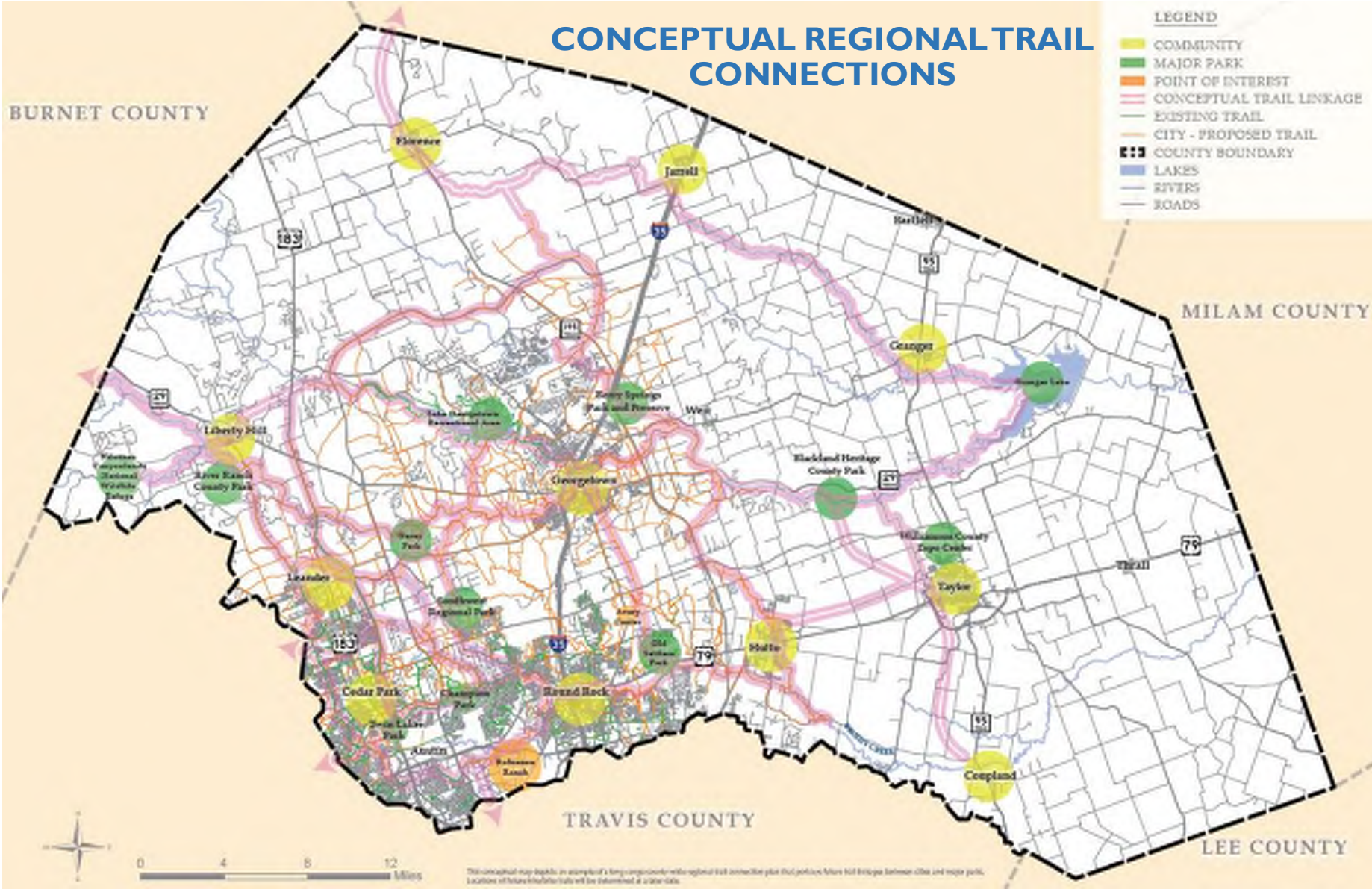




# CONCEPTUAL REGIONAL TRAIL CONNECTIONS

LEGEND

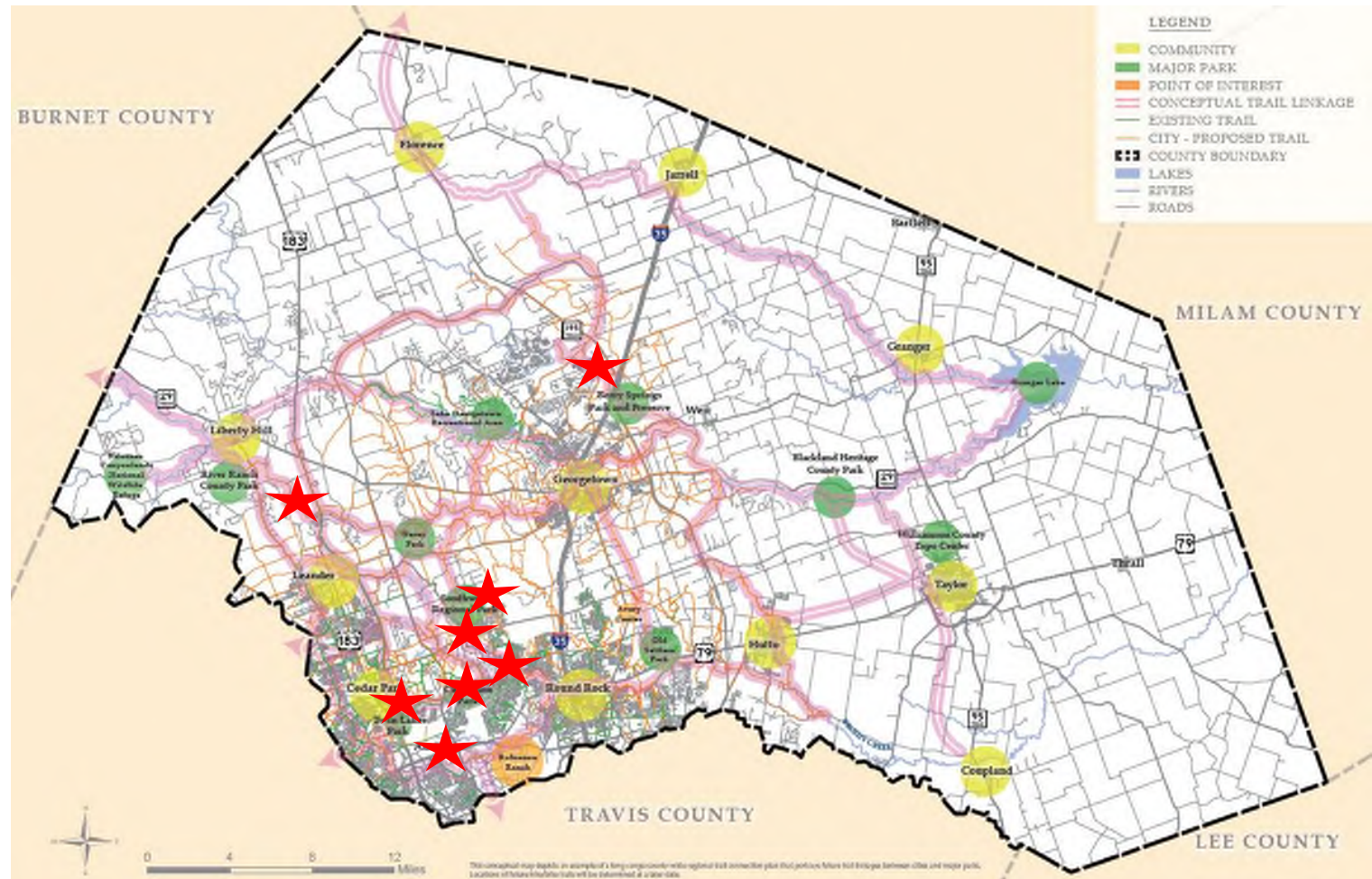
- COMMUNITY
- MAJOR PARK
- POINT OF INTEREST
- CONCEPTUAL TRAIL LINKAGE
- EXISTING TRAIL
- CITY - PROPOSED TRAIL
- COUNTY BOUNDARY
- LAKES
- RIVERS
- ROADS



This conceptual map depicts an example of a long connectivity with regional rail connection plan that provides future rail corridors between cities and major parks. Locations of future trail linkages will be determined at a later date.



# Shared Use Path (SUP) Project Locations





## Shared-Use Path (SUP) Projects

- **Brushy Creek Regional Trail** connection between Fern Bluff MUD and City of Round Rock
- Repair/replace concrete foot bridge on **Lake Creek Trail**
- SUP drainage improvements to BCRT near **Champion Park**
- SUP drainage improvements at **SW Regional Park**
- SUP connecting Cedar Park's Lakeline Park through Twin Lakes to **Brushy Creek Regional Trail**
- SUP connecting **Berry Springs Park & Preserve** to Georgetown's **Westside Park** along Berry Creek
- SUP connecting **SW Regional Park** to **Sam Bass Road**
- Preliminary Trail Design Report for future connectivity between **River Ranch County Park** and **Garey Park**



# Facility Development Projects

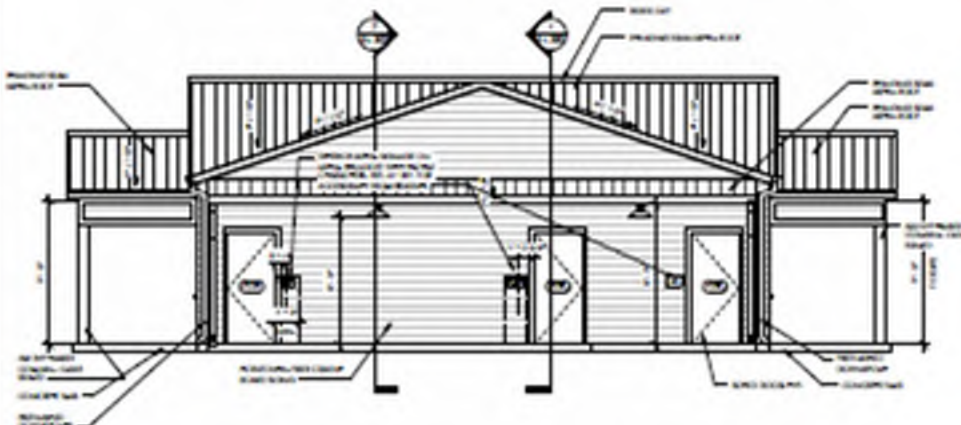
- **Berry Springs Park & Preserve**
- **Expo Center**
- **Twin Lakes Park**



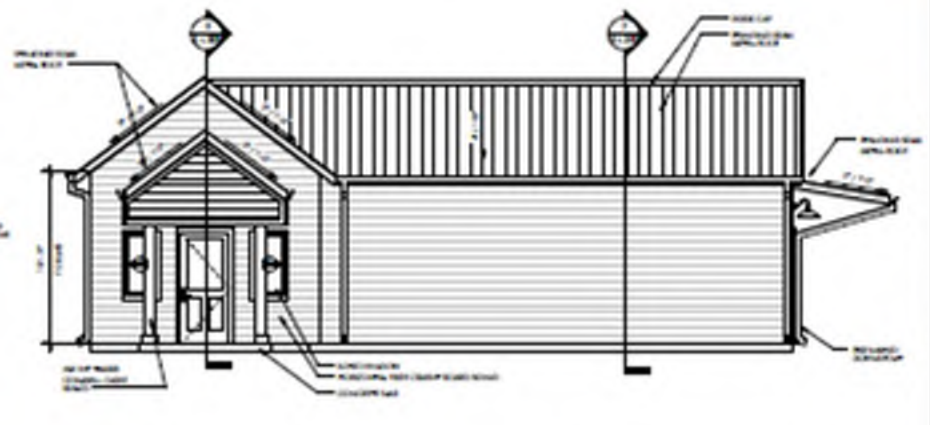




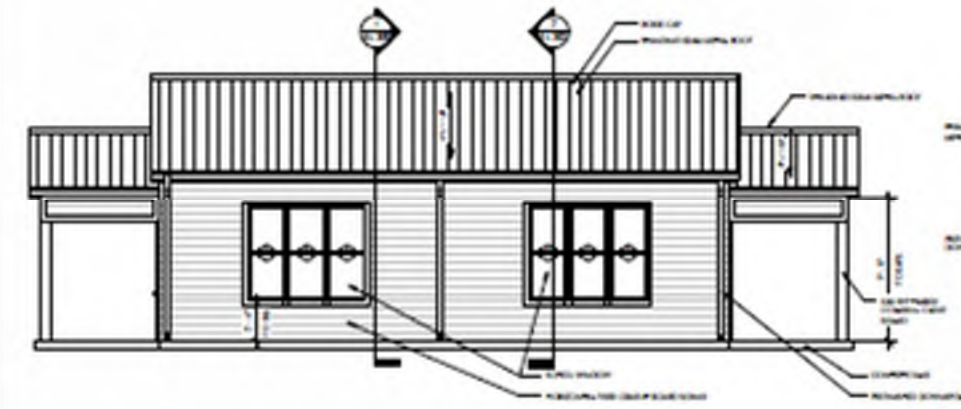
Berry Springs Park & Preserve



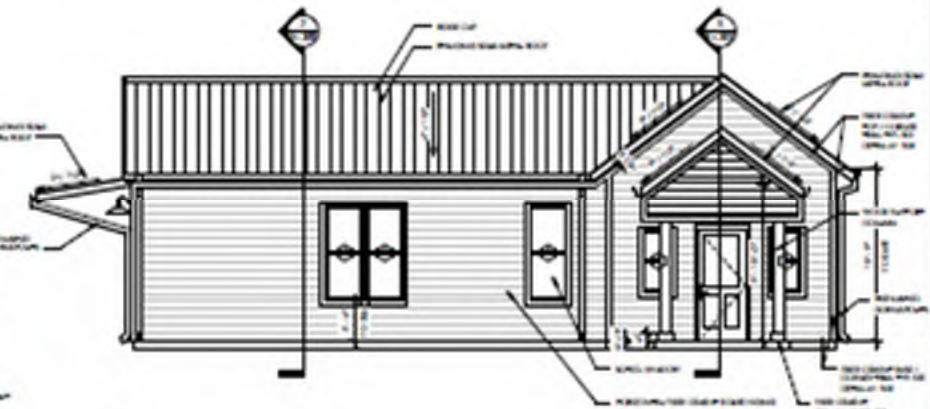
FRONT ELEVATION  
1/2" = 1'-0"



RIGHT SIDE ELEVATION  
3/4" = 1'-0"



LEFT SIDE ELEVATION  
3/4" = 1'-0"



REAR ELEVATION  
3/4" = 1'-0"

FOR REGULATORY REVIEW AND PERMITTING ONLY  
NOT FOR RECORD OR CONSTRUCTION PURPOSES

DATE:	10/1/2024
SCALE:	AS SHOWN
PROJECT:	103 - 103
CLIENT:	WILMINGTON COUNTY
ARCHITECT:	MODE ARCHITECTURE
PROJECT NO.:	103-103
DATE:	10/1/2024





Williamson County Exposition Center



# Twin Lakes Park - YMCA

## Parking Expansion

Project	Sponsor (YMCA)	Williamson County
4 Parking Expansion	\$ -	\$ 875,450
<b>TOTAL</b>	<b>\$ -</b>	<b>\$ 875,450</b>

*The parking expansion portion of the project completes an additional 126 spaces that were part of the original park master plan.*

*Funded by Williamson County.*



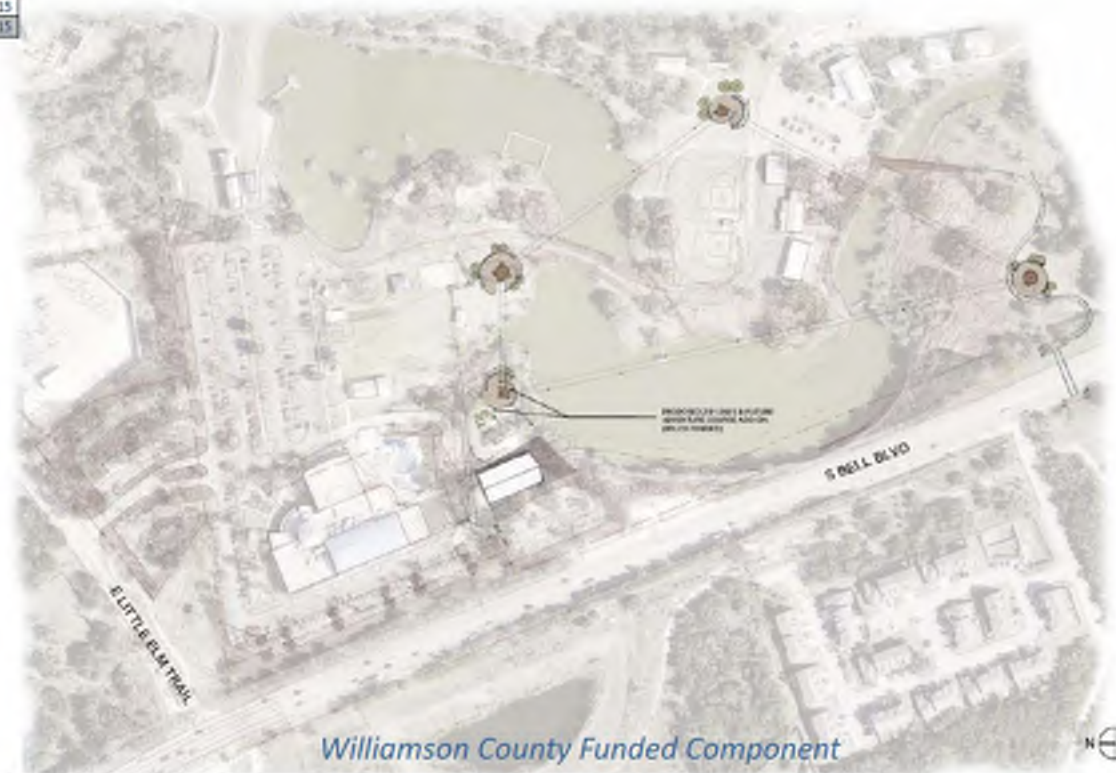
Master Plan - Phase 2 - Future Parking Exhibit



# Twin Lakes Park - YMCA

## Adventure and Zip Line Course

Project	Sponsor (YMCA)	Williamson County
3 Adventure Course and Zip Line Course	\$ 2,155,000	\$ 3,005,415
<b>TOTAL</b>	<b>\$ 2,155,000</b>	<b>\$ 3,005,415</b>



Williamson County Funded Component

Master Plan - Phase I Report Cover & Adventure Course Add-on Exhibit





## Future Parkland

- **Expansion Criteria:**

- Large acreage (~1,000 acres) with regional focus
- Nature based and passive recreation oriented
- Consider partnership opportunities
- Regional trail connectivity
- Emphasis on education and conservation







Expo Center



# 2023 General Election

- Election Day is November 7.
- Last day to register to vote is October 10.
- Mail ballot application deadline is October 27.
- Early vote begins October 23 and ends November 3.
- More information at [www.wilcotx.gov/elections](http://www.wilcotx.gov/elections).



# Open Houses

- ~~Oct. 3: Georgetown Annex, 100 Wilco Way, Georgetown~~
- ~~Oct. 5: Williamson County Expo Center, 5350 Bill Pickett Trail, Taylor~~
- ~~Oct. 10: J.B. and Hallie Jester Annex, 1801 E. Old Settlers Blvd, Round Rock~~
- **Oct. 19:** Williamson County Cedar Park Annex, 350 Discovery Blvd., JP 2 Courtroom, Cedar Park

Questions?

[www.wilcotx.gov/2023bonds](http://www.wilcotx.gov/2023bonds)

Email [publicinformation@wilco.org](mailto:publicinformation@wilco.org)